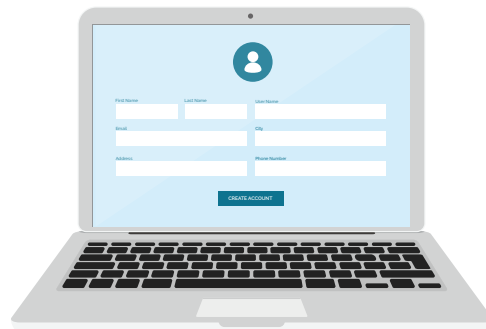


New metering assembly installation process

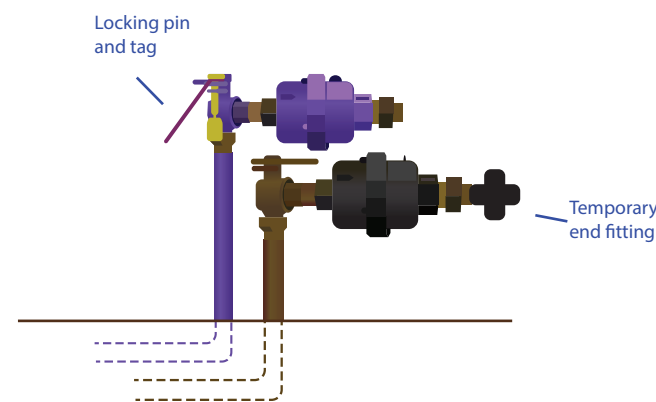
Recycled water areas

1 Plumbing application lodged via Property +



The new installation process is scheduled to commence in early 2020. A reduced application fee will be introduced as part of the new process.

2 City West Water will install meter assemblies



City West Water will install right angle ball valve and integral dual check meter for both drinking and recycled water.

A temporary end fitting will be placed on the drinking water meter to allow pressure testing of both the drinking and recycled pipework during construction.

A locking pin and tag will be placed on the recycled meter to prevent use of recycled water during construction.

3 Plumber to complete internal pipework

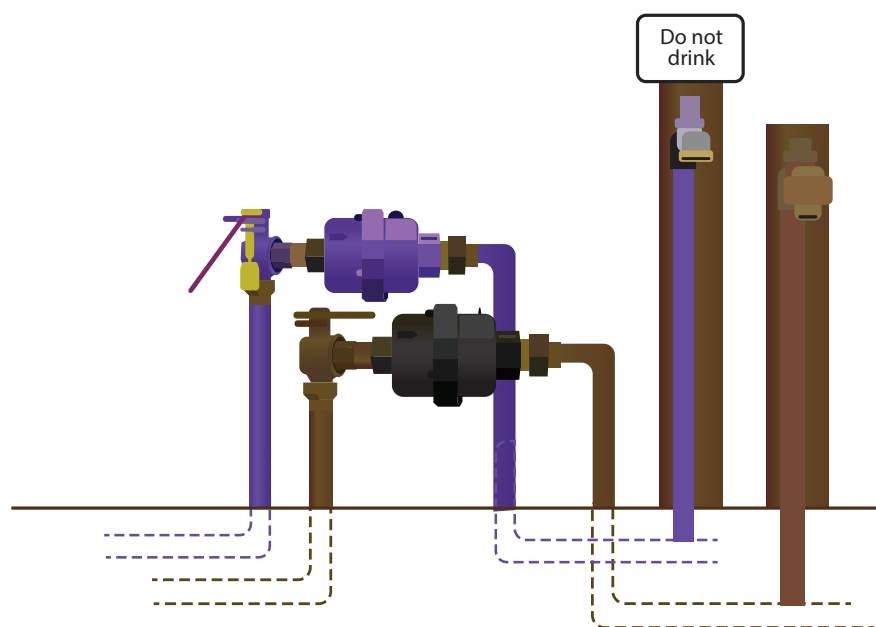


Both the drinking and recycled water will be temporarily connected to the drinking water meter.

The recycled water inspections (R1 and R2) will be booked as normal.

To ensure protection of the water supply and billing accuracy for our customers, water meters are not to be removed.

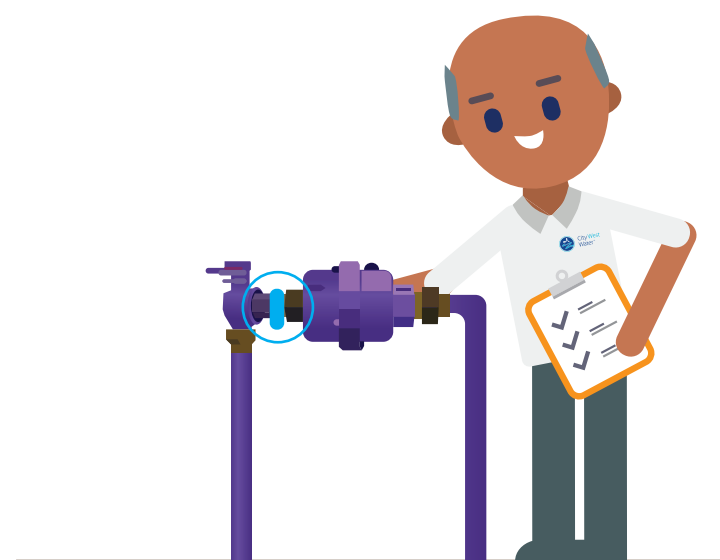
4 Plumber will supply and install front garden taps



Once pressure testing of the internal pipework has been completed the plumber will remove the temporary end fitting and connect the drinking and recycled pipework to their respective meter assemblies.

The plumber will then book in the commissioning (R3) inspection.

5 City West Water inspector will remove locking pin.



Upon successful completion of the commissioning (R3) inspection the inspector will remove the locking pin and will install a tag to indicate commissioning inspection has passed.